

CMA Youth Orchestra Learning Goals and Audition Requirements

Beginning Orchestra requirements for entry (NO AUDITION REQUIRED):

- Graduation from a CMA Lindenbaum Outreach Program Strings Class or 1 year of private lessons
- Well-established instrument and bow-hold; proper posture
- No music reading experience or limited knowledge of note reading
- Can play A and D major

Chamber Orchestra requirements for entry:

- Well-established instrument, bow hold, and posture
- Read all C, G, and D major notes in first position fluidly
- Read all rests and rhythms from whole to 8th-notes, including simple dotted rhythms
- Able to hook, slur, and play staccato/legato bowings
- Able to follow Orchestra Director and blend with group
- Knowledge of dynamics

Audition Material for Chamber Orchestra:

- Scales with Hook and Slur bowings:
 - Violins: 2-Octave G Major Scale
 - Violas and Cellos: 2-Octave C Major Scale
 - Basses: 1-Octave D Major Scale
- Assigned piece
- 2-4 lines of sight-reading

CMA Performers requirements for entry:

- Concurrent enrollment in private lessons or CMA Small-Group Lessons
- Can play and read notes in keys up to 3 sharps and 3 flats in first position
- Read all rhythms generally, including sixteenths, all dotted rhythms, and triplets
- Comfortable with more complicated bowing patterns, including lifts
- Able to shift to 3rd position and developing further shifting skills
- Emerging vibrato

Audition Material for CMA Performers:

- Scales and Arpeggios
 - Violins: 2-Octave D Major Scale and Arpeggios
 - Violas and Cellos: 2-Octave G Major Scale and Arpeggios
 - Basses: 2-Octave Scale of choice
- Assigned piece

- 3-6 lines of sight-reading, including accidentals

As always, please let us know if you have any questions! svader@tlu.edu or (830) 372-6448

Auditions for Chamber Orchestra and CMA Performers

Once your student graduates from the outreach classes and into the orchestras, they are **not expected** to advance from level to level each year.

- It is natural that **it may take several years** before a student is ready to audition and advance without the aid of private lessons.
- The audition must demonstrate to instructors that the student has **mastered the learning goals of their current group** and is **ready for new challenges** in the next level.
- Students will be satisfied and learn the most in the group that is closest to their ability level. Consult your student's instructor if you would like advice regarding your students' current skills and preparedness to advance.
- Our desire is that the CMA Youth Orchestras be a place where all students feel comfortable and able to continue learning at their own pace - all the way through high school.

The audition should not be a stressful event. Some performance anxiety is expected, but if a student is ready to audition they should at least feel comfortable easily performing the required music in the privacy of the home. CMA instructors are experienced with auditions and performances of our own and are able to separate any effects of performance anxiety in an audition from preparedness to advance.

AUDITION MATERIAL - SEE EXCERPTS AT BOTTOM

CHAMBER ORCHESTRA

CMA PERFORMERS

VIOLIN - CHAMBER AUDITION MUSIC

- G Major Scale, 2 octaves, half note rhythm
- 182. SURPRISE SYMPHONY THEME, Andante, Franz Josef Haydn

VIOLA - CHAMBER AUDITION MUSIC

- C Major Scale, 2 octaves, half note rhythm
- 182. SURPRISE SYMPHONY THEME, Andante, Franz Josef Haydn

CELLO - CHAMBER AUDITION MUSIC

- C Major Scale, 2 octaves, half note rhythm
- 182. SURPRISE SYMPHONY THEME, Andante, Franz Josef Haydn

BASS - CHAMBER AUDITION MUSIC

- 64. ESSENTIAL ELEMENTS QUIZ - THE D MAJOR SCALE
- 182. SURPRISE SYMPHONY THEME, Andante, Franz Josef Haydn

VIOLIN - CMA PERFORMERS - AUDITION MUSIC

- D Major scale, 2 octaves, half note rhythm
- D Major Arpeggio
- **10. The Mill, CORNELIUS GURLITT, Moderato tempo**

(1820–1901) *Arranged by Larry Clark Transcribed and edited by Doris Gazda*

VIOLA - CMA PERFORMERS - AUDITION MUSIC

- G Major scale, 2 octaves, half note rhythm
- G Major Arpeggio
- **10. The Mill, CORNELIUS GURLITT, Moderato tempo**

(1820–1901) *Arranged by Larry Clark Transcribed and edited by Doris Gazda*

CELLO - PERFORMERS - AUDITION MUSIC

- G Major scale, 2 octaves, half note rhythm
- G Major Arpeggio
- **10. The Mill, CORNELIUS GURLITT, Moderato tempo**

(1820–1901) *Arranged by Larry Clark Transcribed and edited by Doris Gazda*

BASS - PERFORMERS - AUDITION MUSIC

- SCALE: 2 octave scale of choice and arpeggio
- **10. The Mill, CORNELIUS GURLITT, Moderato tempo**

(1820–1901) *Arranged by Larry Clark Transcribed and edited by Doris Gazda*

CHAMBER ORCHESTRA AUDITION EXCERPTS BY INSTRUMENT:

VIOLIN- INTERMEDIATE AUDITION MUSIC
G Major

Handwritten musical notation for a violin audition piece in G Major. The score consists of three staves. The first staff begins with a treble clef, a key signature of one sharp (F#), and a 4/4 time signature. The music is written in a simple, melodic style with quarter and eighth notes. The second and third staves continue the melody with similar rhythmic patterns.

182. SURPRISE SYMPHONY THEME

Printed musical notation for the Surprise Symphony Theme by Franz Josef Haydn. The score is in G Major and 3/4 time, marked "Andante". It consists of three staves. The first staff starts with a treble clef and a common time signature. The second staff includes dynamic markings of *p* (piano) and *f* (forte), and features a downward bow stroke arrow and an upward bow stroke arrow. The third staff includes a *f* dynamic marking and a four-measure rest. Boxed numbers 5, 9, and 13 indicate specific measures. The composer's name, "Franz Josef Haydn", is written in the upper right corner.

VIOLA- INTERMEDIATE AUDITION MUSIC
C MAJOR SCALE - 2 OCTAVES

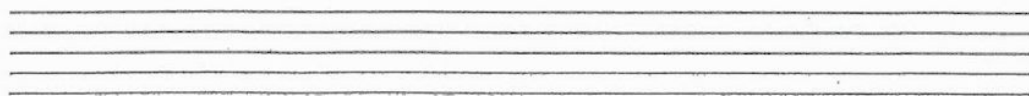


182. SURPRISE SYMPHONY THEME

Andante

Franz Josef Haydn

Printed musical score for the Surprise Symphony Theme by Franz Josef Haydn. The score is in 3/4 time and includes dynamics such as *p* (piano) and *f* (forte). It features fingerings (e.g., 5, 9, 13, 4) and slurs. The notation is arranged in three systems, each with a treble and bass clef staff.



CELLO - INTERMEDIATE AUDITION MUSIC
C MAJOR SCALE - 2 OCTAVES

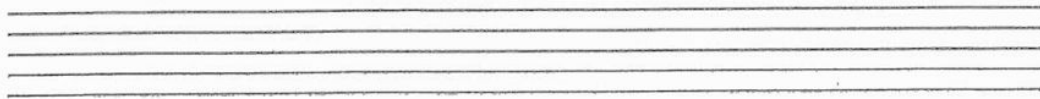


182. SURPRISE SYMPHONY THEME

Andante

Franz Josef Haydn

Printed musical notation for the first three lines of the Surprise Symphony Theme in bass clef, 3/4 time. It includes dynamics (*p*, *f*), fingering (1-3), and breath marks (*v*). Measure numbers 5, 9, and 13 are indicated in boxes.



BASS - INTERMEDIATE AUDITION MUSIC

64. ESSENTIAL ELEMENTS QUIZ - THE D MAJOR SCALE

Musical notation for the D major scale in bass clef, 4/4 time signature. The scale is written across two staves. The first staff contains the first two lines of the scale, and the second staff contains the last two lines. Fingerings are indicated with numbers 1-4 and -2, -4. A Roman numeral 'III' is placed below the first staff, and 'I' is placed below the second staff.

182. SURPRISE SYMPHONY THEME

Andante

Franz Josef Haydn

Musical notation for the Surprise Symphony Theme in bass clef, common time signature. The piece is marked "Andante" and "p" (piano). The notation is spread across three staves. It includes dynamic markings "p", "f", and "p". Boxed numbers 5, 9, and 13 indicate specific measures. Roman numerals "V" are placed above certain notes. The piece concludes with a double bar line.

CMA PERFORMERS ORCHESTRA AUDITION EXCERPTS BY INSTRUMENT:

VIOLIN - ADVANCED
AUDITION MUSIC

D Major

1

1 2 3 4 4 3 2 1 2

D Major Arpeggio

4

1 4 1 1 1 4 1 1 1 1 1 1 1 1 1

0

The Mill

CORNELIUS GURLITT
(1820-1901)

Arranged by Larry Clark
Transcribed and edited by Doris Gazda

Moderato

1 0 2 0 3 1 0 4 4 0

VIOLA- ADVANCED
AUDITION

MUSIC G Major Scale

G major arpeggio

The Mill

CORNELIUS GURLITT
(1820-1901)

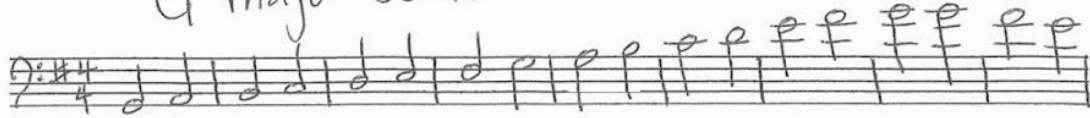
Arranged by Larry Clark

Transcribed and edited by Doris Gazda

Moderato

CELLO-ADVANCED AUDITION MUSIC

G major scale



G major arpeggio



The Mill

CORNELIUS GURLITT
(1820-1901)

Arranged by Larry Clark
Transcribed and edited by Doris Gazda

Moderato

Musical score for 'The Mill' by Cornelius Gurlitt. The score is in G major (one sharp) and 2/4 time. It consists of four staves of music. The first staff starts with a treble clef and a key signature of one sharp (F#). The tempo is marked 'Moderato'. The first measure is marked with a first ending bracket and a 'p' dynamic. The second staff has a first ending bracket and a 'f' dynamic. The third staff has a first ending bracket and a 'p' dynamic. The fourth staff has a first ending bracket and a 'f' dynamic.

BASS - ADVANCED AUDITION MUSIC

SCALE: 2 OCTAVE SCALE OF CHOICE
AND ARPEGGIO

10

The Mill

CORNELIUS GURLITT
(1820-1901)

Arranged by Larry Clark
Transcribed and edited by Doris Gazda

Moderato

1

7

13

19

p

f

p

f

p

f