

BULLDOG BOUND



ON YOUR WAY TO
BECOMING A
TLU
BULLDOG

IN THIS *Guide*

LIVING ON CAMPUS

RESIDENCE HALL OPTIONS &
HOW TO APPLY FOR HOUSING

CAMPUS DINING

& MEAL PLAN OPTIONS

STUDENT ORGANIZATIONS

& WAYS TO GET INVOLVED

FIRST-YEAR PROGRAMS

PEER MENTORS & THE
FRESHMAN EXPERIENCE

TEXAS LUTHERAN UNIVERSITY
Learn Boldly. Live to Inspire.

Welcome to TLU - *a place you can call home.*



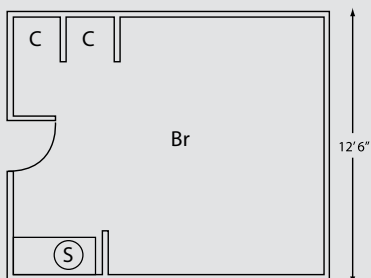
We're here to walk you through your transition to college life that includes decisions about housing and meal plans as well as information on getting involved on campus and the next steps in the enrollment process.

LIVING ON CAMPUS

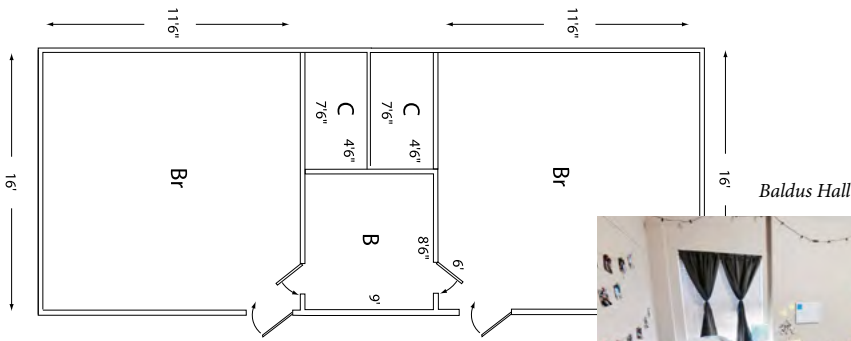
Living on campus is an important part of the TLU experience. Students who live on campus form a strong sense of community through their involvement in various activities and organizations across campus and their daily interactions with peers, faculty, and staff. Take a virtual campus tour at tlu.edu/virtual.

HOUSING OPTIONS

We offer a variety of housing options, including Centennial Hall, the South Halls (Clifton, Trinity and Baldus), Seguin Hall, Knutson Hall, Hahn Hall, and the North and South Apartments. Each residential living option provides a safe and welcoming environment where you can easily walk to class, Hein Dining Hall, the Chapel, the Alumni Student Center or the fitness center at Jones Sports Complex. Learn more about our residence halls at tlu.edu/virtual.



CENTENNIAL HALL is a three-story, 48,000-square-foot freshman living, learning community with classrooms, meeting rooms, and open spaces for students to gather for studying or relaxing with friends. The first floor features a game room and laundry facility with washers and dryers available to residents at no charge. The second and third floors feature double rooms with community bathrooms. It also hosts our First Generation Living Learning Community which allows first-generation Bulldogs to connect with a diverse group who share a common focus.

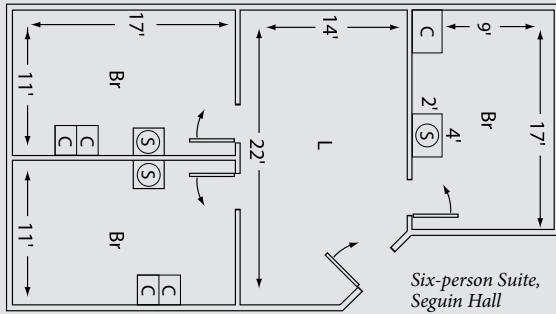


Baldus Hall

SOUTH HALLS – CLIFTON, TRINITY & BALDUS are for freshmen and contain suite-style bathrooms.



How to apply for HOUSING



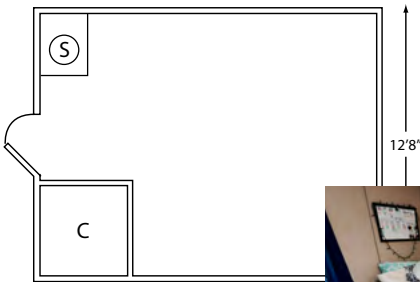
Six-person Suite, Seguin Hall

SEGUIN HALL combines both the community bath and the suite-style bedrooms into one functional space. This residence hall is for students who have been at TLU for at least one year. It is co-ed by floor/wing.

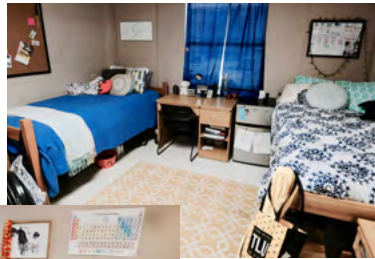
After we receive your enrollment deposit and proof of meningitis vaccination, you may complete your housing application on MyTLU. During the summer, the Campus Living office houses students based on the date the housing application is received. For specific dates related to housing, please refer to the checklist included in your acceptance packet.

All full-time students are required to live on campus unless they meet specific criteria to reside off campus. Specific requirements to reside off campus can be found at: www.tlu.edu/life-at-tlu.

For more information about living on campus, contact the Campus Living office located in the Alumni Student center at campusliving@tlu.edu or 830-372-8065.



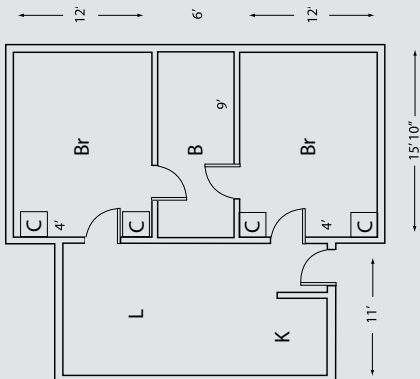
Knutson Hall



NORTH HALLS - KNUTSON & HAHN are traditional residence halls with a community bath setup. The North Halls are for students who have been at TLU for at least one year. They are co-ed by floor.



- B=Bathroom
- Br=Bedroom
- C=Closet
- L=Living Space
- K=Kitchen
- S=Sink



NORTH & SOUTH APARTMENTS are designed for four people. The apartments are furnished and designed for junior and senior level students or those in their third year or more of college. We also have apartments available for graduate students, married students, and families.



CAMPUS DINING

TLU's professional, culinary-trained dining services team prepares daily meal selections at Hein Dining Hall and Lucky's Snack Bar in the Alumni Student Center.

HEIN DINING HALL

Hein Dining Hall offers fresh fruit and salads, home-style entrées, freshly baked pizza and pasta, deli choices on freshly baked breads, new creations by our executive chef, homemade soups, ice cream and freshly baked desserts. Accommodations can be made for students with dietary restrictions, food allergies, and religious restrictions.



KIM SMITH, DIRECTOR OF OPERATIONS, AND HER FAMOUS MISS KIM'S HOT COOKIE NIGHT IS A FAVORITE TRADITION IN HEIN DINING HALL.

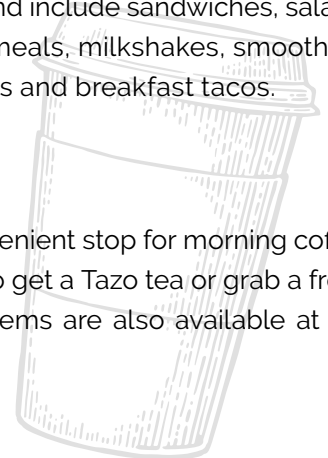


LUCKY'S SNACK BAR

Lucky's features the WOW American Eats, a successful and popular brand developed in New Orleans. Menu items include their famous wings as well as wraps, over-sized chopped salads, Angus burgers, quesadillas, chicken tenders, and red beans and rice. Lucky's also features a SubConnection that offers subs made with high-quality meats, garden fresh produce, and fresh breads. For students on the run, Simply to Go items are always available and include sandwiches, salads, fruit cups, yogurt cups, microwavable meals, milkshakes, smoothies, protein shakes, meal replacement shakes and breakfast tacos.

TSCHOEPE CAFÉ

Tschoepe Café in Tschoepe Hall is a convenient stop for morning coffee or an afternoon frappuccino. You can also get a Tazo tea or grab a fresh scone, muffin, or cookie. Simply to Go items are also available at the Tschoepe Café.





Meal Plan Options

TLU's meal plans have been designed with flexibility and convenience in mind. Students living in a residence hall can choose from Meal Plan A, B, or C. Students living in an apartment (equipped with a kitchen) may select any meal plan or may choose to purchase only Bulldog Bucks.

Meal Plan A

19 meals per week plus \$150 Dining Dollars. This plan allows unlimited access to Hein Dining Hall during business hours.

Meal Plan C

12 meals per week plus \$250 Dining Dollars. Choose any 12 meals served at Hein Dining Hall. The meal plan week begins on Saturday morning and unused meals do not carry over from week-to-week.

Meal Plan B

15 meals per week plus \$150 Dining Dollars. Choose any 15 meals served at Hein Dining Hall. The meal plan week begins on Saturday morning and unused meals do not carry over from week-to-week.

Meal Plan D

40 meals per semester plus \$450 Dining Dollars. This plan is available to TLU apartment residents, commuters, as well as faculty and staff.

Dining Dollars

Dining Dollars are a part of meal plans. They do not carry over from semester to semester. They may be used at Hein to purchase meals or at Lucky's Snack Bar or Tschoepe Café to purchase meals or snacks.

Bulldog Bucks

To supplement your meal plan, residents and commuters may purchase Bulldog Bucks in \$25 increments including tax. Bulldog Bucks do carry over from semester to semester.

For more information about dining on campus and meal plans, go to tlu.sodexomyway.com or contact **Campus Living at 830-372-8065** or campusliving@tlu.edu.



STUDENT ORGANIZATIONS

At TLU, getting involved on campus is just as important as succeeding in the classroom. From honor societies to fraternities and sororities, campus ministries, music groups, academic organizations, and intramural sports, there are hundreds of ways to get involved on campus.

CAMPUS ORGANIZATIONS

- Admissions Ambassadors
- Black & Gold President's Council
- Campus Activities Board
- Peer Mentors
- Pathway Guides
- Residence Assistants
- Student Government Association
- Supplemental Instruction Leaders
- Collaborative Learning Assistants

DEPARTMENTAL ORGANIZATIONS

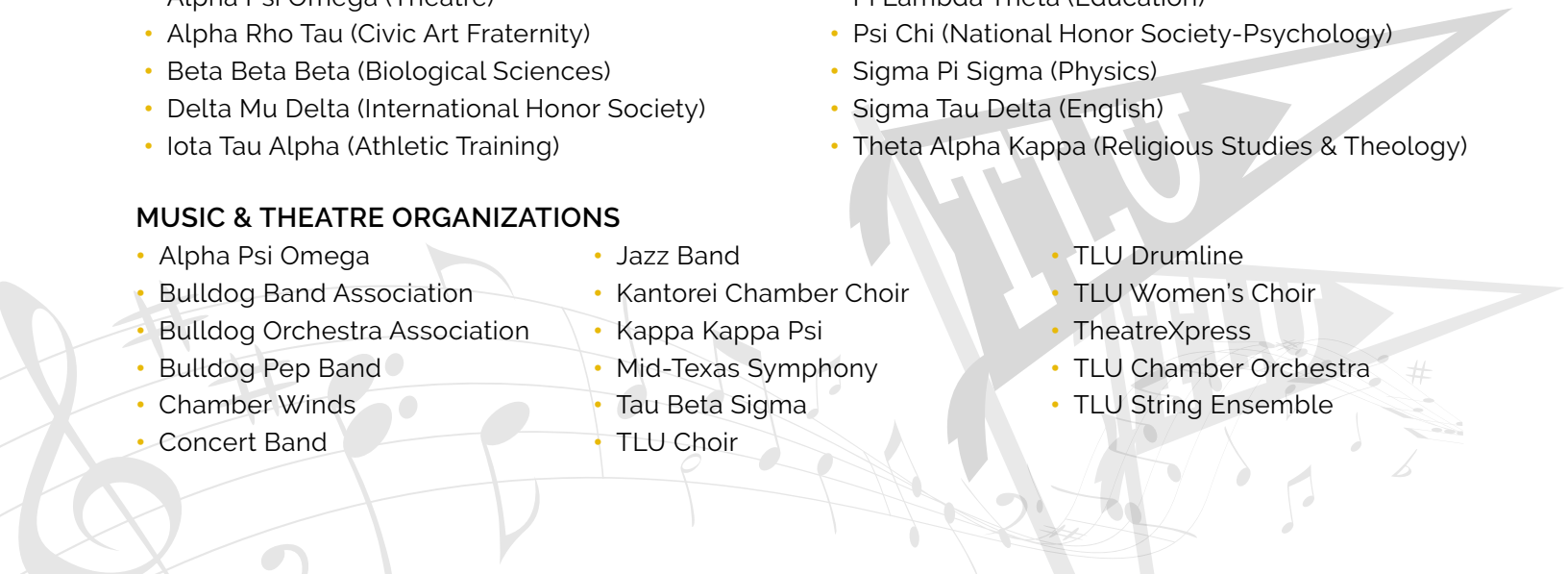
- Alpha Kappa Psi (Business)
- American Computing & Machinery
- Athletic Training Club
- Kinesiology Club
- Mathematical Association of America
- National Alliance on Mental Illness
- Philosophy Club
- Pi Rho
- Pre-Health Professional Club
- Psychology Club
- Society of Physics Students
- Student Athlete Advisory Committee
- Student Education Association
- Texas Academy of Science
- TLU Student Nurses Association

HONOR SOCIETIES

- Alpha Chi (American Collegiate Honor Society)
- Alpha Lambda Delta (Academic Excellence)
- Alpha Mu Gamma (Foreign Language)
- Alpha Psi Omega (Theatre)
- Alpha Rho Tau (Civic Art Fraternity)
- Beta Beta Beta (Biological Sciences)
- Delta Mu Delta (International Honor Society)
- Iota Tau Alpha (Athletic Training)
- Lambda Pi Eta (Communication)
- National Society of Leadership & Success
- Phi Alpha Theta (American Honor Society)
- Pi Lambda Theta (Education)
- Psi Chi (National Honor Society-Psychology)
- Sigma Pi Sigma (Physics)
- Sigma Tau Delta (English)
- Theta Alpha Kappa (Religious Studies & Theology)

MUSIC & THEATRE ORGANIZATIONS

- Alpha Psi Omega
- Bulldog Band Association
- Bulldog Orchestra Association
- Bulldog Pep Band
- Chamber Winds
- Concert Band
- Jazz Band
- Kantorei Chamber Choir
- Kappa Kappa Psi
- Mid-Texas Symphony
- Tau Beta Sigma
- TLU Choir
- TLU Drumline
- TLU Women's Choir
- TheatreXpress
- TLU Chamber Orchestra
- TLU String Ensemble



CAMPUS MINISTRIES & RELIGIOUS ORGANIZATIONS

- Campus Ministries
- Canterbury Association (Episcopal)
- Catholic Student Association (CSO)
- Christian Fellowship
- Wesley Foundation (Methodist)

SERVICE & SOCIAL ORGANIZATIONS

- Beta Alpha Sigma
- Black Student Union
- Competitive Gaming League
- Council for Fraternity & Sorority Life
- Delta Alpha Delta
- Environmental Action (EnAct)
- Goldstar Dance Team
- Habitat for Humanity
- Kappa Pi Gamma
- Mariachi Oro y Negro de TLU
- Men of Honor
- Mexican-American Student Association (MASA)
- Omega Tau
- Service Through Music
- Sexuality Awareness for Everyone
- Sigma Delta Lambda
- Sigma Phi Theta
- TLU Student Veterans of America
- Water to Thrive
- Xi Tau
- Zeta Chi



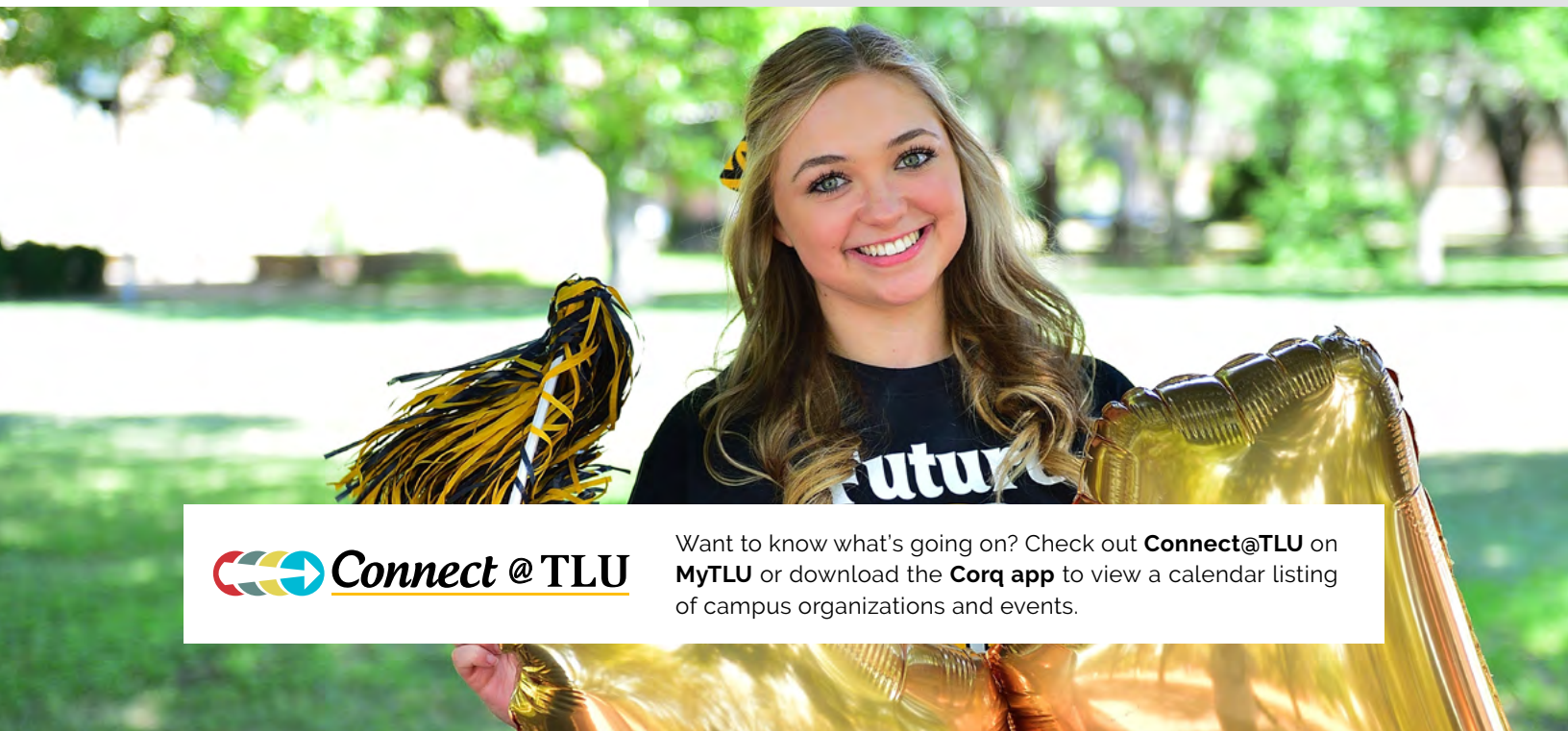
CAMPUS RECREATION & THE FITNESS CENTER

Students have various opportunities to stay fit, have fun, and meet new people through intramural sports. For a full list of sports activities and schedules, visit www.imleagues.com and enter **Texas Lutheran University**.

INTRAMURAL EVENTS INCLUDE:

- Flag football
- Kickball
- Softball
- Sand volleyball
- Disc Golf
- Swim meets
- Dodgeball
- 5 v. 5 Basketball
- Spikeball
- 3 v. 3 Basketball
- Tennis
- Fitness Center
- Indoor volleyball
- Racquetball

The TLU Grossman Fitness Center, next to the Jones Athletic Complex and Mabee Aquatic Center, is equipped with treadmills, bikes, ellipticals, rowing machines, stair climbers, weight machines, and free weight equipment. The fitness center is open seven days a week and is free for TLU students. Numerous fitness classes including cardio dance and yoga are also free for students.



Want to know what's going on? Check out **Connect@TLU** on **MyTLU** or download the **Corq app** to view a calendar listing of campus organizations and events.

FIRST-YEAR PROGRAMS



The Division of Student Affairs is responsible for first-year programs, academic support services, service learning and career development, health services, campus living, veteran support services, student engagement, counseling and ADA services.

Students and their families will learn more about Student Affairs and the services they offer at Bulldog Orientation. Bulldog Orientation is designed to give students the best possible start to a successful TLU experience. It is an opportunity to meet new people, adjust to a new home, develop friendships, and discover ways to get involved on campus.

During orientation, students get to meet their Peer Mentor and learn about many on-campus support resources that are available to them. All first-year students are enrolled in a Freshman Experience course (FREX134) during their first semester at TLU. A peer mentor is assigned to each FREX course, and attends Bulldog Orientation with their FREX students to help with their transition to college life. The official dates and details related to Bulldog Orientation 2024 will be available at www.tlu.edu/orientation in early spring.

We're here to help you!

This is a lot of information at once and a lot to remember but don't worry – your admissions representative is here to help you throughout the enrollment process. From housing and meal plans to financial aid and registering for classes, we serve as your first point of contact until you begin classes. We're here to help you be successful!

Contact Admissions at admissions@tlu.edu or **830-372-8050**.

Connect with Us: [@txlutheran](https://twitter.com/txlutheran)



tlu.edu



Facebook
[facebook.com/
txlutheran](https://facebook.com/txlutheran)



Twitter
[twitter.com/
txlutheran](https://twitter.com/txlutheran)



Instagram
[instagram.com/
txlutheran](https://instagram.com/txlutheran)



TLU

Learn Boldly. Live to Inspire.