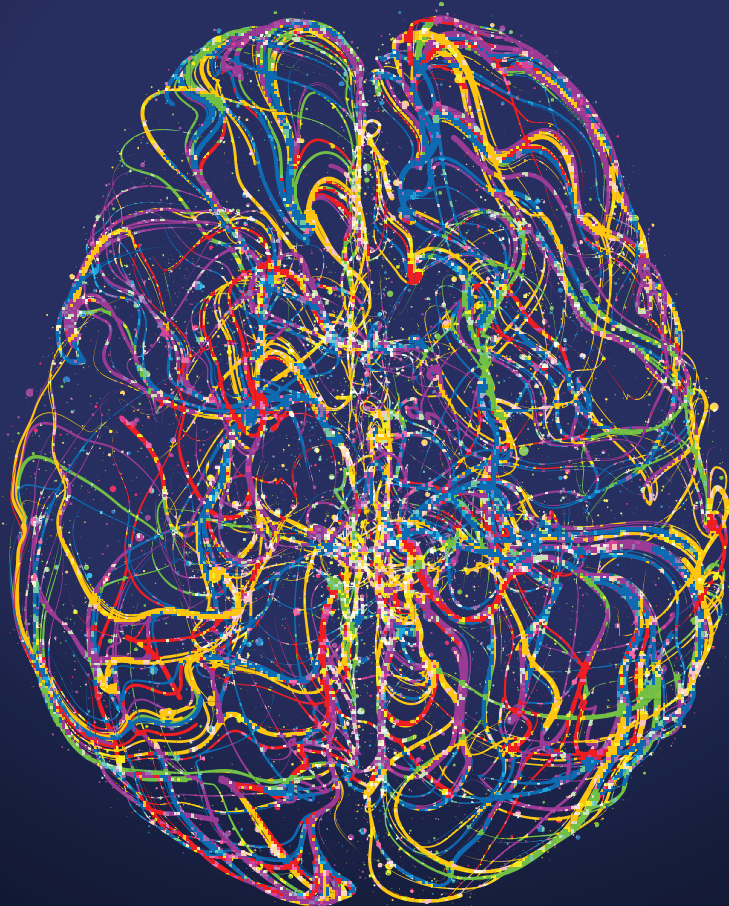


Texas Lutheran University

PSYCHOLOGY



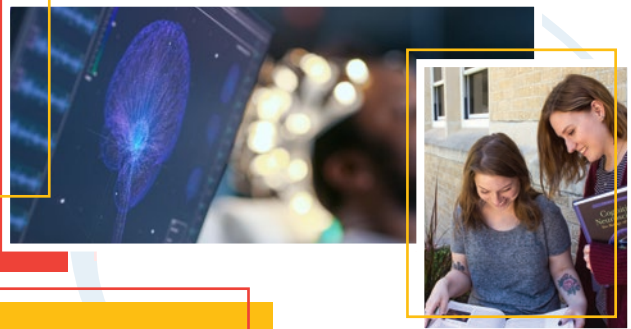
Bachelor of Science or Bachelor of Arts in Psychology

What Is A Psychologist?



Psychology is an exciting scientific discipline that focuses on behavior, thoughts and emotion, as well as helping people.

It is often referred to as a "hub discipline" meaning it links to many other areas of study including business, theology, music, biology, and computer science. Psychology allows you to explore any of those interests and more. Our graduates are on the path for careers in counseling, clinical or experimental psychology, the health professions, social work, law, and seminary. If you are curious about how science and the mind intersect, psychology is for you.



Degrees

At TLU, psychology majors can pursue a Bachelor of Arts (B.A.) or a Bachelor of Science (B.S.). Either degree provides the necessary training for acceptance into a diverse range of graduate and professional programs. The B.A. emphasizes psychological disorders, clinical psychology, communications, political science, and sociology. The B.S. emphasizes statistics, biology, chemistry, and physics.

TLU faculty love working with students and also serve as academic advisors to help them decide what courses will work best for them and their career path. Undergraduates can be successful immediately upon graduation with more opportunities emerging for those who go on to earn a Master of Arts or a Master of Science in counseling or experimental psychology. Even more opportunities arise for those interested in pursuing a Ph.D. in clinical or experimental psychology or an M.D. in psychiatry.

Core Courses

- Introduction to Psychology
- Introduction to Social Psychology
- Developmental Psychology
- Quantitative Methods

Specialty Courses

- Cognitive Neuroscience
- Behavioral Neuroscience
- Psychopathology
- Drugs and Behavior

The department offers a range of additional classes covering subjects like human sexuality, sleeping and dreaming, substance abuse treatment in the criminal justice system, and deviance and aggression.

The Science & Practice Behind It All

Faculty-Led Research

Although choosing the right degree is important, conducting faculty-led research and presenting at professional conferences can be the difference when getting an interview for graduate school or even landing a job. Every year, the department supports students with registration, travel, and lodging to attend the Southwestern Psychological Association conference. Recent research has covered topics like eyewitness testimony, online dating, student success, facial recognition and emotional expression, animal learning, language development, and much more.



Faculty:

Dr. Scott Bailey, Ph.D. in Behavioral Neuroscience, Kansas State University

Dr. Mike Czuchry, Ph.D. in Experimental Psychology with Cognitive Emphasis, Texas Christian University

Dr. Beth Woods, Ph.D. in Developmental Psychology, Cognitive Neuroscience Focus, University of Houston

Dr. Tiffany Sia, Ph.D. in Experimental Psychology with Social Emphasis, Texas Christian University

Internship Opportunities

Internships are another important way to distinguish yourself from your peers. Students have had enriching and transformative experiences while interning locally at the Hospice care program at Guadalupe Regional Medical Center, the school psychology program in Seguin, the Guadalupe Family Violence Shelter, and Child Protective Services. All of these experiences require an important understanding of psychological processes and respect and compassion for the human condition.

Community Connections

While TLU has strong connections with our surrounding communities, the Psychology Department offers specific courses developed to help students connect with people living in and around Seguin. Students in the Community Psychology course have led clothing and food drives to support organizations specializing in providing homes and adoption services. Additionally, the Lifespan Development class helps students embrace service-learning experiences and meaningful connections to the community.



"The psychology faculty at TLU helped me realize my potential and got me interested in research. They showed me that research can be fun and interesting. I can honestly say I would have likely never pursued an advanced degree, let alone multiple, if it had not been for their guidance. The opportunity to work closely with them and develop relationships helped me recognize my own ability. They gave me the push to pursue a graduate education and develop relationships I genuinely cherish."

Josh Haby '09

M.A., Master Of Legal Studies
Psychology & Sociology Major
Ph.D. Candidate in Dual Psychology & Law Program
The University of Nebraska - Lincoln
Business Manager for Scientific Resources For The Law

TLU Has Alumni Who Pursued Graduate Programs At:

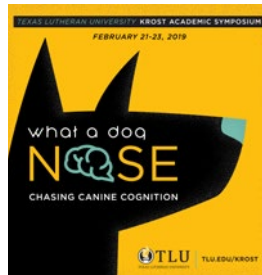
The Ohio State University
University of Alaska Fairbanks
University of Connecticut
The University of Texas at Austin

Rice University
Texas Tech University
Arizona State University

TLU's premier academic event:

Annual Krost Symposium

Recent themes for TLU's annual Krost Symposium have included the **Neurocognition of Music and Art**, as well as **What A Dog Nose: Chasing Canine Cognition**.



For more information, visit www.tlu.edu/psychology. To schedule a customized visit where you can meet with faculty in the department, go to www.tlu.edu/visit.